



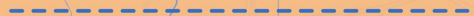
WASTE WARRIORS OF DELHI

LOCATING OUR WASTE PICKER COMMUNITIES ACROSS THE CITY

“

We help keep the city clean but we have to live in filth. We work but are not recognized. We ask for the right to our identity and right to access waste.

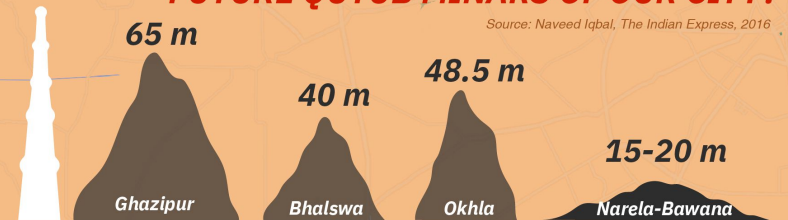
- Jagruti Devi, Waste Picker



72.5 m

FUTURE QUTUB MINARS OF OUR CITY?

Source: Naveed Iqbal, The Indian Express, 2016



Recycle the waste collected and reduce quantity of waste to be sent to dumpsites or incinerators

Reduce emissions and our collective environmental burden

Generate livelihoods for a marginalized group

Make our cities healthier and cleaner

Save resources and energy of the municipality by providing waste management services

4 Rs of Waste pickers' Demands

- » **RECOGNITION** and integration into the waste management system
- » **REGISTRATION** and enumeration of waste pickers at the city level
- » **REPRESENTATION** in waste management related policymaking
- » **RIGHTS** and social protection

KEY

- Waste Picker Communities
- Operational Landfills
- Closed Landfills
- Waste To Energy Plants

MULTIPLE CHALLENGES

Despite their immense contributions, waste pickers face many challenges including lack of recognition and workers' rights, lack of formal space for work, social stigma and harassment, and health hazards due to the nature of their work.



JOURNEY OF A WASTE PICKER IN THE WASTE CHAIN SYSTEM

WASTE PICKERS ARE THE RECYCLERS OF OUR CITY!

MIXED WASTE DRY WASTE

WASTE-TO-ENERGY PLANT

DO YOU KNOW?

Delhi only recycles 9% of its waste out of which 95% of the waste is recycled by the informal sector.

Source: UN, A New Circular Vision For Electronics, World Economic Forum, 2019

95%

"I collect, sort and transport 10-15 kgs of waste everyday and earn only 3000-5000 per month. The coming of compactors has reduced my income by 30%"

"I have been recycling plastic since years and can differentiate all its types"

RECYCLING FACTORIES



FIRST LAYER OF SEGREGATION AT THE DHALAO

DHALAO

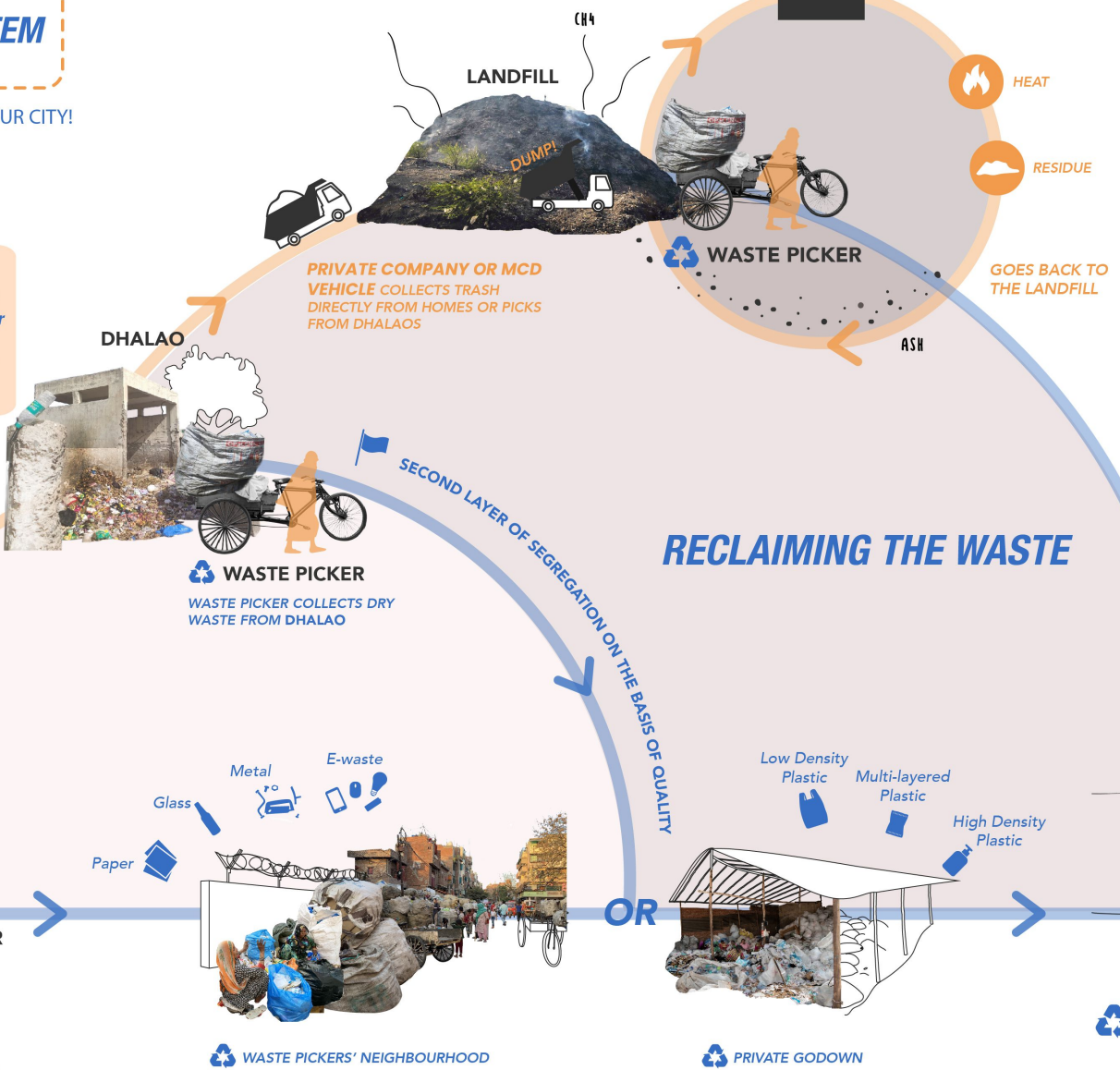
SECOND LAYER OF SEGREGATION ON THE BASIS OF QUALITY

RECLAIMING THE WASTE

FIRST LAYER OF SEGREGATION AT DOOR-TO-DOOR OR THE NEIGHBOURHOOD LEVEL



SOURCES OF WASTE



Waste Pickers play a critical role in taming the wild and growing beast that is solid waste in Delhi. They need proper allocation of space for their work, such as: space at the neighbourhood level for primary sorting, material recovery points and recyclable markets.

SOURCES
Locations of waste-picker communities have been sourced from the membership data of the Delhi Roundtable on Solid Waste Management, and is not an exhaustive listing of all such settlements in Delhi.



SOCIAL DESIGN COLLAB

Illustrated by: Anchal Sayal & Nishtha Kashyap